



23rd to 26th February 2024

SAILING INSTRUCTIONS

Platinum Sponsor



The Organising Authority is the New Zealand Millennium Cup Committee and the New Zealand Marine Export Group Inc. Under the auspices of The Royal New Zealand Yacht Squadron.



NB: The notation '[DP]' in a rule in the SI means that the penalty for a breach of that rule may, at the discretion of the protest committee, be less than disqualification.

1 RULES

Refer to NOR Item 1. The NZ Millennium Cup will be governed by;

- 1.1 The rules as defined in the Racing Rules of Sailing (RRS).
- 1.2 [Appendix SY version 3.1](#), December 2018 to the RRS.
- 1.3 The [ORC Superyacht Rule](#) (ORCSy).

2 CHANGES TO SAILING INSTRUCTIONS

Any change to the sailing instructions will be posted before 0800 on the day it will take effect, except that any change to the schedule of races will be advised at the morning briefing. All changes will be posted on www.millenniumcup.com.

3 NOTICES WITH COMPETITORS

- 3.1 Notices to competitors will be posted on www.millenniumcup.com.
- 3.2 On the water, the race committee will make courtesy broadcast to competitors on VHF channel 17.
- 3.3 The NZ Millennium Cup Race Office is located in the NZ Millennium Cup Marquee, Northern Halsey Wharf (by Jellicoe Harbour).

4 SIGNALS MADE ASHORE

Any signals made ashore will be transmitted via the dedicated Whatsapp channel, email and/or text,

5 SCHEDULE OF RACES

- 5.1 There will be a daily race briefing from 0800 hrs each Race Day (The time for the daily race briefing of 8am overrides the Notice of Race where the time was 9am). This meeting will be held at NZ Millennium Cup race headquarters. There must be at least one representative from each yacht at this meeting. It is recommended to be attended by the Captain, designated officer and Racing Tactician or Navigator.
- 5.2 Schedule of Racing:

Date	First Warning Signal	Races To Be Sailed
Orams Marine Race Day Saturday 24 th February 2024	1055 hrs	1 or 2 races
NZ Millennium Cup Sunday 25 th February 2024	1055 hrs	1 or 2 races
Monday 26 th February 2024	1055 hrs	1 or 2 races

- 5.3 On the last scheduled day of racing no warning signal will be made after 1530. Unless all boats agree to a later time.

6. DIVISIONAL FLAG

The Divisional Flag for the Millennium Cup will be the NZ Millennium Cup flag with a blue background.

7. RACING AREA

- 7.1 The Race Area will be the “Approaches to Auckland” (NZ 532)
- 7.2 The Start Area is described in Addendum A of these SI’s.

8. THE COURSES

- 8.1 The courses will to be sailed each day will be notified advised via VHF, Whatsapp Captain Group not less than 15 minutes before the firsts boat’s start, or if they are known, they will advise everyone at the Owners and Captain’s meeting.
- 8.2 The appropriate start area will be advised at the daily Owners and Captains’ race briefing.
- 8.3 The marks that may be used will also be explained at daily briefings. These will be described with approximate GPS positions and the side of the boat in which the mark is to be passed and the approximate position of the finish.

9. MARKS

- 9.1 The Course Marks are described in Addendum B of these SI’s.
- 9.2 The Starting and Finishing Marks are described in Addendum B of these SI’s.

10. STARTS

- 10.1 Races will be started using the staggered start. The starting sequence will be announced at or before the 1st skippers briefing.
- 10.2 The start sequence for the first boat scheduled to start will be as described below. The absence of a sound signal shall be disregarded.

Start Signals - First Boat to Start	
Warnings	Signal
5 minute warning	Division flag and VHF call and Sound Signal
4 minute warning	VHF call
3 minute warning	VHF call
2 minute warning	VHF call
1 minute before start	VHF call
Starting	1 sound signal and VHF call
Start of other boats	1 sound signal and VHF call

- 10.3 The starting line will be between a staff displaying an orange flag on the Signal Boat at the starboard end and the course side of the port-end starting mark.
- 10.4 Boats whose warning signal has not been made shall avoid the starting area during the starting sequence for other races. [DP]
- 10.5 If any part of the yacht’s hull, is on the course side of the starting line at the start signal, the Race Committee will broadcast her name and/or sail number on VHF channel 17. Any yacht identified shall not return to restart and will be given a time penalty equal to five minutes plus the time she was over early. This changes RRS 29.1.

11. CHANGE OF THE NEXT LEG OF THE COURSE

Racing Rule 33 is replaced by the following:

If the Race Committee signals a change of course (advised via channel 17) as the boats approach a mark, after rounding/passing that mark, boats shall sail directly to the finish.

12. THE FINISH

- 12.1** The finishing line will be between the Signal Boat and the Outer Distance Mark.

13. PENALTY SYSTEMS

- 13.1** Where a boat has broken a rule in Part 2 of the Racing Rules or Racing Rule 31, only one turn, including one gybe and one tack, is required. This changes Racing Rules 44.1 and 44.2.
- 13.2** A boat that has taken a penalty or retired under Racing Rule 31 or Racing Rule 44.1 shall inform the Race Committee on VHF channel 17.

14. TIME LIMITS AND TARGET TIMES

There is no Time Limit.

15. PROTESTS AND REQUESTS FOR REDRESS

- 15.1** Immediately after finishing a boat intending to protest shall, in addition to the requirements of Racing Rule 61.1(a), inform the Committee Boat at the finishing line of her intention to protest and the identity of the boat(s) protested against. The protesting boat must receive an acknowledgement from the Race Committee. This changes Racing Rule 61.
- 15.2** Protest forms are available at the NZ Millennium Cup Headquarters. Protests shall be delivered there within the protest time limit. Parties lodging protests must be present in the vicinity of the NZ Millennium Cup Headquarters from the protest time limit until their protest is heard.
- 15.3** The protest time limit is 90 minutes after the last boat in its division has finished the last race of the day. The same protest time limit applies to all protests by the Race Committee and Protest Committee about incidents they observe in the racing area. This changes Racing Rules 61.3 and 62.2. Protest time limits will be posted.
- 15.4** Notices to competitors will be posted on the website www.millenniumcup.com. Hearings will be held as soon as practicable.
- 15.5** Notices will also be posted at the Millennium Cup website. Failure for a competitor to access this information will not be grounds for redress. This changes RRS 62.
- 15.6** Breaches of instructions 12.2, 16 or 17 will not be grounds for a protest by a boat. This changes Racing Rule 60.1(a). Penalties for these breaches may be less than disqualification if the protest committee so decides. [DP]
- 15.7** For protests where only a rule in Part 2 of the Racing Rules or Racing Rule 31 is alleged to have been broken, Appendix T Arbitration applies
- 15.8** Rating protests must be lodged by the end of protest time on Orams Marine Race Day.

16. SCORING

- 16.1** The Race Committee will decide the scoring method, course length (for ToD), wind range for scoring each race (using the resources at its disposal, such as forecasts, pre-race readings from on-course Race Committee boats, trends, etc) and its decisions shall not be grounds for redress by the boat. This changes RRS 60.1(b). The scoring

method will be announced on VHF channel 17 when the first boat is on the last leg of the course.

- 16.2** One race is to be completed to constitute a series.
- 16.3** A boat's series score will be a total of her race scores.
- 16.4** The scoring abbreviation for a discretionary penalty given under instruction 14.6 will be SCP.

17. SAFETY REGULATIONS

- 17.1** A boat that retires from a race shall notify the race committee via VHF channel 17 as soon as possible.
- 17.2** Any boat or equipment may be inspected at any time for compliance with safety requirements, rating certificates and/or Sailing Instructions.
- 17.3** No later than the close of the protest time limit applying to the division the boats are sailing in, the Race Committee will report any breaches of the safety standards to the protest committee requesting action on the report. If a breach of the safety standards is upheld then "The race score for a boat that takes a Scoring Penalty shall be the score she would have received without that penalty, made worse by the number of places stated in the Sailing Instructions. When the Sailing Instructions do not state the number of places, the penalty shall be 20% of the score for Did Not Finish, rounded to the nearest whole number (0.5 rounded upward). The scores of other boats shall not be changed; therefore, two boats may receive the same score. However, the penalty shall not cause the boat's score to be worse than the score for Did Not Finish.

18. EVENT ADVERTISING

Sponsor's flags, decals and Tracking Devices may be provided by the organising committee. If these are provided they must be displayed or activated as required by the organising committee, including during all races participated in during the regatta. Protests over the failure to display sponsors' flags, decals and or Tracking Devices can only be lodged by the Race Committee.

19. SUPPORT BOATS

- 19.1** Each vessel may be accompanied by its own motorised escort boat whose functions may include warning spectator boats and the like.
- 19.2** Escort boats should be available to assist in the management of the race if requested by the race committee.
- 19.3** Only NZ Millennium Cup official vessels are to be present at the start line.
- 19.4** Any infringement of this Sailing Instruction may result in a discretionary penalty against the escorted boat (DP).

20. RADIO COMMUNICATION

- 20.1** Except in an emergency, a boat that is racing shall not make voice or data transmissions and shall not receive voice or data communication that is not available to all boats. This restriction also applies to mobile telephones. [DP]
- 20.2** Race information will be broadcast by the committee on **VHF Channel 17** and the dedicated Whatsapp channel.

20.3 At their discretion, the Signal Boat may answer radio queries relating to courses, time and racing. This modifies Racing Rule 41

20.4 Boats shall use **VHF channel 17** to communicate with each other while racing.

21 PRIZES

Prizes will be given as follows:

21.1 Trophies and/or prizes will be awarded for first, second and third on handicap for a division where there are at least four yachts entered in that division. Where there are less than four yachts entered in that division trophies and/or prizes will be awarded for first and second on handicap.

21.2 The NZ Millennium Cup will be awarded to the winner of the NZ Millennium Cup division.

22 INSURANCE

Each participating yacht shall be insured with valid third party liability insurance with adequate cover taking into account the value of the yachts racing and the measure of damages likely to arise in the event of an accident. The captain shall ensure that a certificate of insurance (in English) reflecting the above required insurance requirements is carried onboard the yacht at all times during the regatta.

As all owners are aware competitive racing inevitably carries with it an increased risk of collision between boats and resultant damage and expense. The Organising Committee shall not be responsible for losses arising during the regatta (insured or otherwise). All owners and skippers are advised that it is the responsibility of owners and/or skippers to ensure that they carry the relevant insurance. Yachts race at their own risk.

23 DISCLAIMER OF LIABILITY

23.1 Competitors participate in the regatta entirely at their own risk. Competitors agree to take any and all responsibility for the nautical qualities of their boat, the rigging, the crew's ability and the safety equipment. NZ Marine, NZ Marine Export Group, Russell Boating Club and each of their respective sponsors, contractors, volunteers and all other affiliated organisations and individuals, will not accept any liability for damage to property or personal injury or death sustained in conjunction with, prior to, during, or after the regatta. NZ Marine, NZ Marine Export Group, Russell Boating Club and each of their respective affiliates, sponsors, agents, employees, officers, directors and contractors (the "Released Parties") are not responsible for any damage to property or personal injury (including death) sustained in conjunction with or prior to, during, or after the regatta and, as a condition of participating in the regatta, each participant releases all claims that it may have against any of the Released Parties for any damage to property or personal injury (including death) sustained in conjunction with or prior to, during, or after the regatta.

23.2 A Competitor shall be responsible for any and all property damage and personal injury (including death) incurred by yacht, its owner, its captain, its crew members, its guests and/or any third party while the yacht is in or about Russell which arises from the actions or inaction of the yacht, the owner, the captain or crew or guests of the yacht or which arises from the yacht's presence in or about Russell, and the competitor shall indemnify, defend and hold harmless NZ Marine, NZ Marine

Export Group, Russell Boating Club and each of the their respective affiliates, sponsors, agents, employees, officers, directors and contractors (the “Indemnified Parties”) from any and all claims, losses, damages and liabilities suffered or incurred by one or more of the Indemnified Parties in respect of the same.

- 24. RPAS (Remote Piloted Aircraft Systems)** may be used during the event. Participation in the regatta will be taken as agreement and consent to be flown over and have the RPAS operate within close proximity to competing boats. The RPAS Operators employed by the Organising Authority are Civil Aviation Authority Certified Operators and the RSAP are operated within Civil Aviation Authority Rule 102. The Organising Authority does not accept any liability for actual or perceived interference from any RPAS taking photographs during racing.

ADDENDUM A

CHART NZ532..... PAGE 8

ADDENDUM B

COURSE AREA DIAGRAM PAGE 9

ADDENDUM C

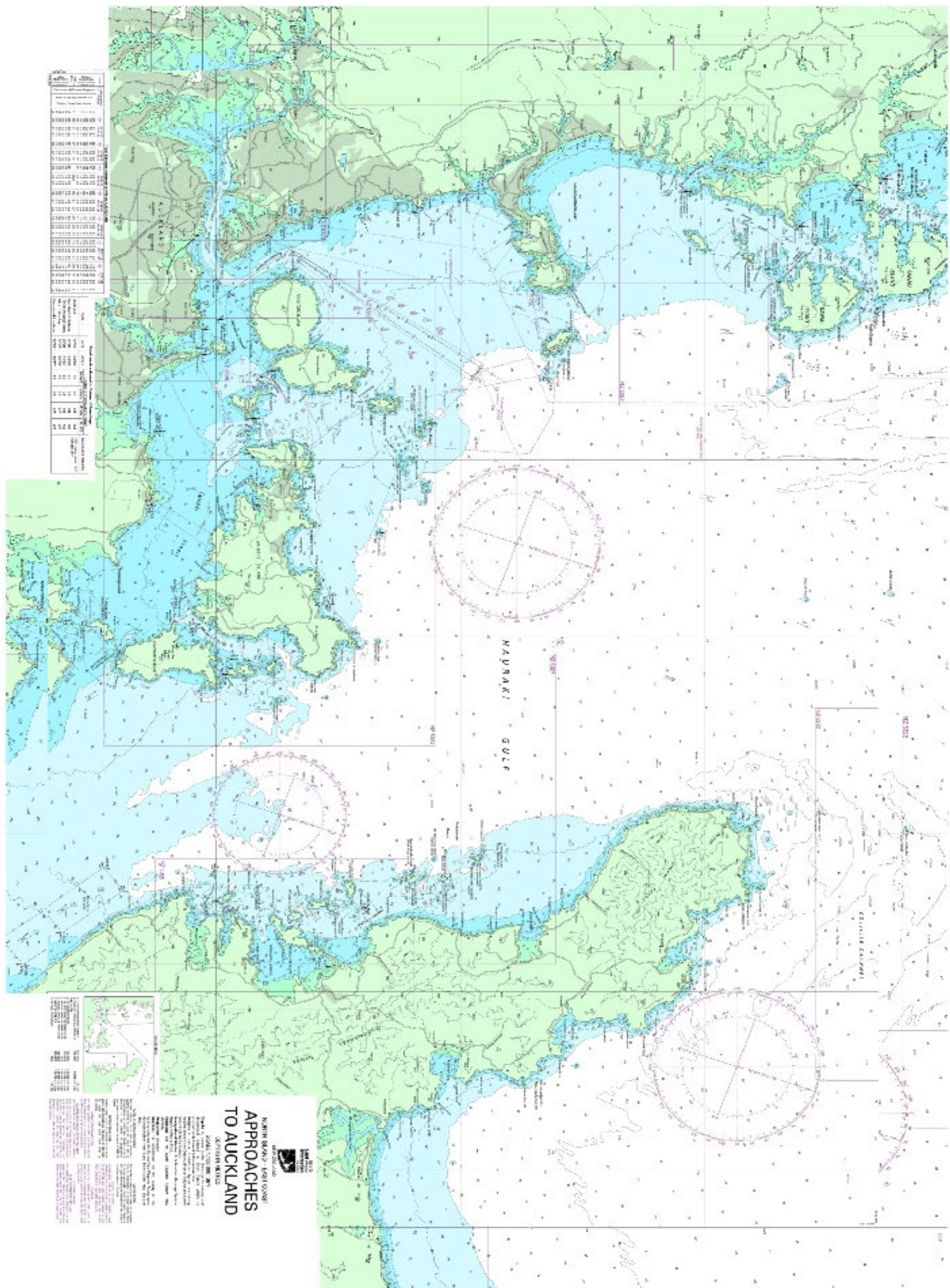
COURSES

ADDENDUM D

MARK DESCRIPTION AND POSITIONS PAGE 11

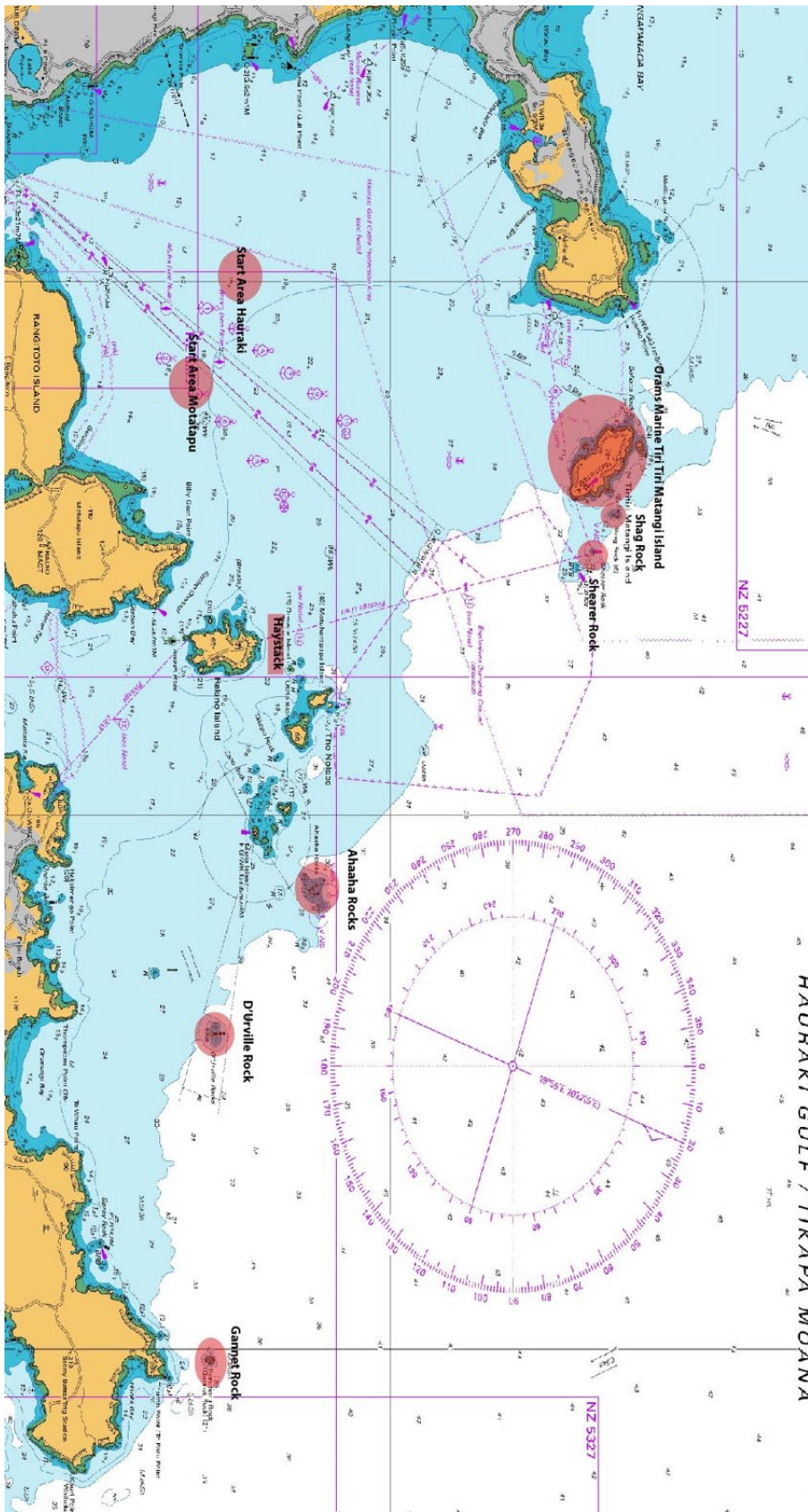
ADDENDUM A

CHART NZ 532



ADDENDUM B

COURSE AREA DIAGRAM



ADDENDUM C

COURSES

Course 1

From either Start Area “Motutapu” or “Hauraki” to Tiri Tiri Island (Stb), Shag Rock (Stb),

Shearer Rock (Stb) to finish where Started. (approx 20.8 nm)

Course 1 A

From either Start Area “Motutapu” or “Hauraki” to Shearer Rock (Port), Shag Rock (Port) leaving Tiri Tiri (Port) to finish where Started. (approx 20.8 nm)

Course 2

From Start Area “Motutapu” leaving the Noises (Stb), Ahaaha Rocks (Stb), Horuhoru Rock (Gannet Rock) (Stb), D’Urville Rock (Stb) leaving Rakino Island (Port) and Haystack (Stb) to Finish where started. (approx. 33.2nm)

Course 3

From Start Area “Motutapu” The Noises (Stb), D’Urville Rock (Stb), Rakino Island (Port) and Haystack (Stb) to finish where Started. (approx. 23.3nm)

Course 4

From Start Area “Motutapu” TiriTiri Island (Stb), D’Urville Rock (Stb), Rakino Island (Port) and Haystack (Stb) to finish where Started. (approx. 33.2nm)

Course 5

From Start Area “Motutapu” TiriTiri Island (Stb), Horuhoru Rock (Gannet Rock) (Stb), Rakino Island (Port) and Haystack (Stb) to finish where Started. (approx. 41.6nm)

Course 6

From either Start Area “Motutapu” or “Hauraki” to Shearer Rock (Stb) to finish where Started. (approx 18.1 nm)

Course 99

From Start Area “Motutapu” to Marks to be transmitted by VHF Radio and through the Whatsapp channel at least 15 minutes before the first boat is due to start. Mark’s will be identified as inflatables with colour and a GPS position and or existing fixed marks with a GPS position including the finish position.

ADDENDUM D

MARK DESCRIPTION AND POSITIONS

Mark GPS positions (all positions are approximate)

Start Area “Motutapu”	36.44.508’S	174.51.621’E
Start Area “Hauraki”	36.44.168’S	174.49.731’E
Orams Marine Tiri Tiri Matangi	See chart for island position	

Shag Rock	36.35.703'S	174.54.394E
Shearer Rock	36.36.185'S	174.55.065'E
Ahaaha Rocks	36. 41 113'S	175.1.708'E
D'Urville Rock	36.43.275'S	174.4.118'E
Horuhoru Rock (Gannett Rock)	36.43.249'S	175.10.319'E
Haystack	36.41.902'S	174.57.260'E

Buoy Identification

Outer Distance Mark (Hauraki, Motutapu start/finish area)

Red Buoy