



**NEW ZEALAND MILLENNIUM CUP 2020**  
29th January to 1st February 2020

## **SAILING INSTRUCTIONS**

Platinum sponsors



The Organising Authority is the New Zealand Millennium Cup Committee and the New Zealand Marine Export Group Inc. under the auspices of the Russell Boating Club

NB: The notation '[DP]' in a rule in the SI means that the penalty for a breach of that rule may, at the discretion of the protest committee, be less than disqualification.

## 1 RULES

Refer to NOR Item 1. The NZ Millennium Cup will be governed by;

1.1 The rules as defined in the Racing Rules of Sailing (RRS).

1.2 [Appendix SY version 3.1](#), December 2018 to the RRS.

1.3 The [ORC Supervacht Rule](#) (ORCSy).

## 2 NOTICES TO COMPETITORS

Notices to competitors will be posted on [www.millenniumcup.com](http://www.millenniumcup.com) and the NZ Millennium Cup App.

## 3 CHANGES TO SAILING INSTRUCTIONS

Any change to the sailing instructions will be posted before 0830 on the day it will take effect, except that any change to the schedule of races will be advised at the morning briefing. All changes will be posted on [www.millenniumcup.com](http://www.millenniumcup.com) and the NZ Millennium Cup App.

## 4 SIGNALS MADE ASHORE

Any signals made ashore will be transmitted by the NZ Millennium Cup App, email and or text.

## 5 SCHEDULE OF RACES

5.1 There will be daily race briefing from 0900 hrs each Race Day. This meeting will be held at NZ Millennium Cup race headquarters at the Duke of Marlborough Hotel, Russell. There must be at least one representative from each yacht at this meeting. It is recommended to be attended by the Captain, designated Safety Officer and Racing Tactician or Navigator.

5.2 Schedule of Racing:

Date	First Warning Signal	Races To Be Sailed
Orams Marine Race Day Thursday 30th January 2020	1055 hrs	1 or 2 races
Boat International Race Day Friday 31st January 2020	1055 hrs	1 or 2 races
Royal Huisman Race Day Saturday 1 <sup>st</sup> February 2020	1055 hrs	1 or 2 races

5.3 On the last scheduled day of racing no warning signal will be made after 1530. Unless all boats agree to a later time.

- 5.4 (a)** The Divisional Flag for the Millennium Cup will be the NZ Millennium Cup flag with a blue background.
- (b)** The Divisional Flag for the Pacific Cup will be the NZ Millennium Cup flag with a white background.

## **6 RACING AREAS**

- 6.1** The Race Area will be the Bay of Islands (chart NZ 5125).
- 6.2** The Start Area is described in Attachment A of these SI's.

## **7 THE COURSES**

- 7.1** The courses are described in Attachment B of these SI's along with the course length, the order in which the marks are to be rounded and the side (Port or Starboard) on which each mark is to be passed.
- 7.2** No boats shall pass to the south of Motuarohia Island (Roberton Island), Moturua Island or Motukiekie Island.

## **8 MARKS**

- 8.1** The Course Marks are described in Attachment B of these SI's.
- 8.2** The Starting and Finishing Marks are described in Attachment B of these SI's.

## **9 STARTS**

- 9.1** Races will be started using the staggered start. The starting sequence will be announced at or before the 1st skippers briefing.
- 9.2** The start sequence for the first boat scheduled to start will be as described below. The absence of a sound signal shall be disregarded.

Start Signals - First Boat to Start	
Warnings	Signal
5 minute warning	Division flag and VHF call and Sound Signal
4 minute warning	VHF call
3 minute warning	VHF call
2 minute warning	VHF call
1 minute before start	VHF call
Starting	1 sound signal and VHF call
Start of other boats	1 sound signal and VHF call

- 9.3** The starting line will be between a staff displaying an orange flag on the Signal Boat at the starboard end and the course side of the port-end starting mark.
- 9.4** Boats whose warning signal has not been made shall avoid the starting area during the starting sequence for other races. [DP]

- 9.5** If any part of the yacht's hull, crew or equipment is on the course side of the starting line at the start signal, the Race Committee will broadcast her name and/or sail number on VHF channel 77. Any yacht identified shall not return to restart and will be given a time penalty equal to five minutes plus the time she was over early. This changes RRS 29.1.

**10 CHANGE OF THE NEXT LEG OF THE COURSE**

Racing Rule 33 is replaced by the following:

If the Race Committee signals a change of course (advised via channel 77) as the boats approach a mark, after rounding/passing that mark, boats shall sail directly to the finish.

**11 THE FINISH**

The finishing line will be between the Signal Boat and the Outer Distance Mark.

**12 PENALTY SYSTEMS**

- 12.1** Where a boat has broken a rule in Part 2 of the Racing Rules or Racing Rule 31, only one turn, including one gybe and one tack, is required. This changes Racing Rules 44.1 and 44.2.
- 12.2** A boat that has taken a penalty or retired under Racing Rule 31 or Racing Rule 44.1 shall inform the Race Committee on VHF channel 77.
- 12.3** Racing Rule 44.1 is changed to permit a boat that has broken a rule in Part 2 of the Racing Rules or Racing Rule 31 to take a penalty after racing but prior to any protest hearing. Her penalty shall be a scoring penalty as calculated in Racing Rule 44.3(c) equal to 40% of the number of entries in her fleet or 50% of the difference between her finishing position and the number of entries in her fleet, whichever is less.

**13 TIME LIMITS AND TARGET TIMES**

There is no Time Limit.

**14 PROTESTS AND REQUESTS FOR REDRESS**

- 14.1** Immediately after finishing a boat intending to protest shall, in addition to the requirements of Racing Rule 61.1(a), inform the Committee Boat at the finishing line of her intention to protest and the identity of the boat(s) protested against. The protesting boat must receive an acknowledgement from the Race Committee. This changes Racing Rule 61.
- 14.2** Protest forms are available at the NZ Millennium Cup Headquarters. Protests shall be delivered there within the protest time limit. Parties lodging protests must be present in the vicinity of the NZ Millennium Cup Headquarters from the protest time limit until their protest is heard.
- 14.3** The protest time limit is 90 minutes after the last boat in its division has finished the last race of the day. The same protest time limit applies to all protests by the Race Committee and Protest Committee about incidents they observe in the racing area. This changes Racing Rules 61.3 and 62.2. Protest time limits will be posted.

- 14.4** Notices will be posted on the notice board in the NZ Millennium Cup Headquarters at the Duke of Marlborough within 30 minutes of the protest time limit to inform competitors of hearings in which they are parties or named as witnesses. Hearings will be held as soon as practicable.
- 14.5** Notices of protests by the Race Committee or Protest Committee will be posted on the notice board in the NZ Millennium Cup Headquarters at the Duke of Marlborough to inform boats under Racing Rule 61.1(b).
- 14.6** Breaches of instructions 10.5, 12.2, 16 or 17 will not be grounds for a protest by a boat. This changes Racing Rule 60.1(a). Penalties for these breaches may be less than disqualification if the protest committee so decides. [DP]
- 14.7** For protests where only a rule in Part 2 of the Racing Rules or Racing Rule 31 is alleged to have been broken, an arbitration hearing may be offered prior to any formal hearing. The Yachting New Zealand regulation on arbitration will apply. This changes Racing Rule 44.1.
- 14.8** Rating protests must be lodged by the end of protest time on Orams Marine Race Day.

## **15 SCORING**

- 15.1** The Race Committee will decide the scoring method, course length (for ToD), wind range for scoring each race (using the resources at its disposal, such as forecasts, pre-race readings from on-course Race Committee boats, trends, etc) and its decisions shall not be grounds for redress by the boat. This changes RRS 60.1(b). The scoring method will be announced on VHF channel 77 when the first boat is on the last leg of the course.
- 15.2** One race is to be completed to constitute a series.
- 15.3** A boat's series score will be a total of her race scores.
- 15.4** The scoring abbreviation for a discretionary penalty given under instruction 14.6 will be SCP.

## **16 SAFETY REGULATIONS**

- 16.1** A boat that retires from a race shall notify the race committee via VHF channel 77 as soon as possible.
- 16.2** Any boat or equipment may be inspected at any time for compliance with safety requirements, rating certificates and/or Sailing Instructions.
- 16.3** No later than the close of the protest time limit applying to the division the boats are sailing in, the Race Committee will report any breaches of the safety standards to the protest committee requesting action on the report. If a breach of the safety standards is upheld then "The race score for a boat that takes a Scoring Penalty shall be the score she would have received without that penalty, made worse by the number of places stated in the Sailing Instructions. When the Sailing Instructions do not state the number of places, the penalty shall be 20% of the score for Did Not Finish, rounded to the nearest whole number (0.5 rounded upward). The scores of other boats shall not be changed; therefore, two boats may receive the same score. However, the penalty shall not cause the boat's score to be worse than the score for Did Not Finish.

## **17 EVENT ADVERTISING**

Sponsor's flags, decals and Tracking Devices may be provided by the organising committee. If these are provided they must be displayed or activated as required by the organising committee, including during all races participated in during the regatta. Protests over the failure to display sponsors' flags, decals and or Tracking Devices can only be lodged by the Race Committee.

## **18 SUPPORT BOATS**

- 18.1** Each vessel may be accompanied by its own motorised escort boat whose functions may include warning spectator boats and the like.
- 18.2** Escort boats should be available to assist in the management of the race if requested by the race committee.
- 18.3** Only NZ Millennium Cup official vessels are to be present at the start line.
- 18.4** Any infringement of this Sailing Instruction may result in a discretionary penalty against the escorted boat (DP).

## **19 RADIO COMMUNICATION**

- 19.1** Except in an emergency, a boat that is racing shall not make voice or data transmissions and shall not receive voice or data communication that is not available to all boats. This restriction also applies to mobile telephones. [DP]
- 19.2** Race information will be broadcast by the committee on **VHF Channel 77** and the NZ Millennium Cup App.
- 19.3** At their discretion, the Signal Boat may answer radio queries relating to courses, time and racing. This modifies Racing Rule 41.
- 19.4** Boats shall use **VHF channel 77** to communicate with each other while racing.

## **20 PRIZES**

Prizes will be given as follows:

- 20.1** Trophies and/or prizes will be awarded for first, second and third on handicap for a division where there are at least four yachts entered in that division. Where there are less than four yachts entered in that division trophies and/or prizes will be awarded for first and second on handicap.
- 20.2** The NZ Millennium Cup will be awarded to the winner of the NZ Millennium Cup division.
- 20.3** The Pacific Cup will be awarded to the winner of the Pacific Cup division.

## **21 INSURANCE**

Each participating yacht shall be insured with valid third party liability insurance with adequate cover taking into account the value of the yachts racing and the measure of damages likely to arise in the event of an accident. The captain shall ensure that a certificate of insurance (in English) reflecting the above required insurance requirements is carried onboard the yacht at all times during the regatta.

As all owners are aware competitive racing inevitably carries with it an increased risk of collision between boats and resultant damage and expense. The Organising Committee shall not be responsible for losses arising during the regatta (insured or otherwise). All owners and skippers are advised that it is the responsibility of owners and/or skippers to ensure that they carry the relevant insurance. Yachts race at their own risk.

## **22 DISCLAIMER OF LIABILITY**

**22.1** Competitors participate in the regatta entirely at their own risk. Competitors agree to take any and all responsibility for the nautical qualities of their boat, the rigging, the crew's ability and the safety equipment. NZ Marine, NZ Marine Export Group, Russell Boating Club and each of their respective sponsors, contractors, volunteers and all other affiliated organisations and individuals, will not accept any liability for damage to property or personal injury or death sustained in conjunction with, prior to, during, or after the regatta.

NZ Marine, NZ Marine Export Group, Russell Boating Club and each of the their respective affiliates, sponsors, agents, employees, officers, directors and contractors (the "Released Parties") are not responsible for any damage to property or personal injury (including death) sustained in conjunction with or prior to, during, or after the regatta and, as a condition of participating in the regatta, each participant releases all claims that it may have against any of the Released Parties for any damage to property or personal injury (including death) sustained in conjunction with or prior to, during, or after the regatta.

**22.2** A Competitor shall be responsible for any and all property damage and personal injury (including death) incurred by yacht, its owner, its captain, its crew members, its guests and/or any third party while the yacht is in or about Russell which arises from the actions or inaction of the yacht, the owner, the captain or crew or guests of the yacht or which arises from the yacht's presence in or about Russell, and the competitor shall indemnify, defend and hold harmless NZ Marine, NZ Marine Export Group, Russell Boating Club and each of the their respective affiliates, sponsors, agents, employees, officers, directors and contractors (the "Indemnified Parties") from any and all claims, losses, damages and liabilities suffered or incurred by one or more of the Indemnified Parties in respect of the same.



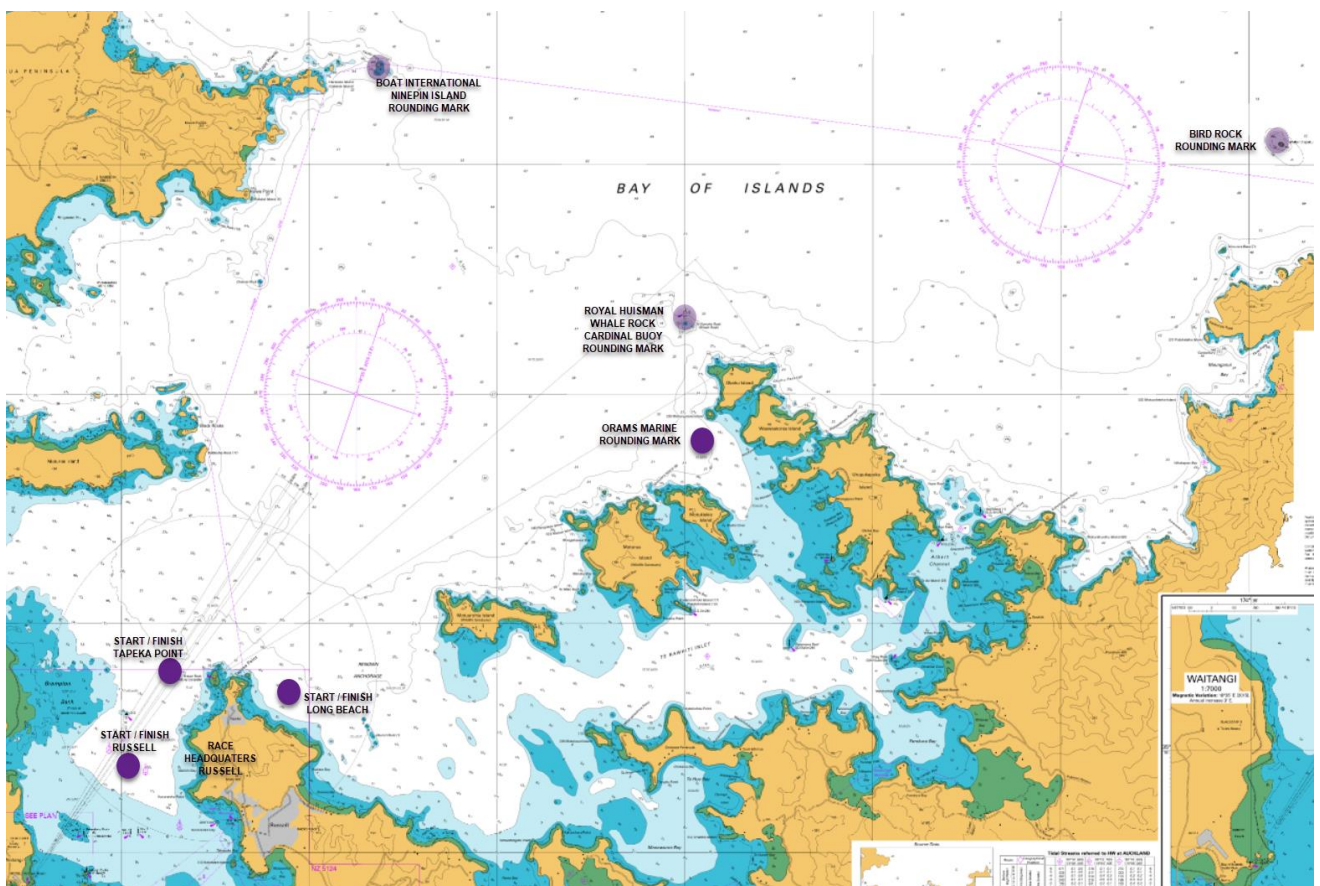
**ATTACHMENT A**  
**COURSE AREA DIAGRAM ..... PAGE 8**

**ATTACHMENT B**  
**COURSES ..... PAGE 9**

**ATTACHMENT C**  
**MARK DESCRIPTION AND POSITIONS ..... PAGE 11**

**ATTACHMENT D**  
**GPS TRACKER INSTRUCTIONS ..... PAGE 12**

**ATTACHMENT A**  
**COURSE AREA DIAGRAM**





## ATTACHMENT B

### COURSES

#### Russell Start Area

**035 15 42 S 174 06 16 E**

#### Course 1

Start Russell, Orams Marine Mark (P),  
Finish Russell 12nm approx

#### Course 2

Start – Boat International Ninepin Island  
(P)  
Finish Russell 14nm approx

#### Course 3 Port

Start – Orams Marine Mark (P) – Boat  
International Ninepin Island (P)  
Finish Russell 18nm approx

#### Course 3 Starboard

Start – Boat International Ninepin Island  
(S) – Orams Marine Mark (S)  
Finish Russell 18nm approx

#### Course 4 Port

Start – Royal Huisman Whale Rock  
Cardinal Buoy (S) - Bird Rock (P) – Boat  
International Ninepin Island (P)  
Finish Russell 27nm approx

#### Course 4 Starboard

Start – Boat International Ninepin (S) –  
Bird Rock (S) – Royal Huisman Whale  
Rock Cardinal Buoy (P)  
Finish Russell 27nm approx

#### Course 5

Start Russell - Orams Marine Mark (P) –  
Royal Huisman Whale Rock (S) - Bird Rock  
(P) – Royal Huisman Whale Rock Cardinal  
Buoy (P) – Orams Marine Mark (S) –  
Boat International Ninepin (P)  
Finish Russell 35nm approx.

#### Course 6

Start Russell - Orams Marine Mark (P) –  
Royal Huisman Whale Rock Cardinal Buoy  
(S) - Bird Rock (P) - Ninepin (P)  
Finish Russell 30nm approx

#### Course 7

Start Russell - Orams mark (P) – Royal  
Huisman Whale Rock Cardinal Buoy (S) -  
Bird Rock (P) – Royal Huisman Whale Rock  
Cardinal Buoy (P)  
Finish Russell 27nm approx.

### **Tapeka Point Start Area**

**035 14 39 S 174 06 17 E**

#### **Course 8**

Start – Boat International Ninepin Island (P)

Finish Tapeka Point 12nm approx

Finish Russell 13nm approx

#### **Course 9 Port**

Start – Orams Marine Mark (P)

– Boat International Ninepin Island (P)

Finish Tapeka Point 16nm approx

Finish Russell 17nm approx

#### **Course 9 Starboard**

Start – Boat International Ninepin Island

(S) - Orams Marine Mark (S)

Finish Tapeka Point 16nm approx

Finish Russell 17nm approx

#### **Course 10**

Start- Orams Marine Mark (P)

Finish Tapeka Point 11nm approx

#### **Course 11 Port**

Start – Royal Huisman Whale Rock

Cardinal Buoy (S) - Bird Rock (P) - Boat

International Ninepin Island (P)

Finish Russell 26nm approx

#### **Course 11 Starboard**

Start – Boat International Ninepin Island

(S) – Bird Rock (S) – Royal Huisman Whale

Rock Cardinal Buoy (P)

Finish Russell 26nm approx

### **Long Beach Start Area**

**035 14 24 S 174 08 01 E**

#### **Course 12**

Start – Boat International Ninepin Island (P)

Finish Long Beach. 11nm

Finish Russell 12nm approx

#### **Course 13 Port**

Start – Orams Marine Mark (P) – Boat

International Ninepin Island (P)

Finish Long Beach 15nm approx

Finish Russell 16nm approx

#### **Course 13 Starboard**

Start – Boat International Ninepin Island

(S) – Orams Marine Mark (S)

Finish Long Beach 15nm approx

Finish Russell 16nm approx

#### **Course 14**

Start – Orams Marine Mark (P)

Finish Long Beach 10nm approx

#### **Course 15 Port**

Start – Royal Huisman Whale Rock

Cardinal Buoy (S) - Bird Rock (P) – Boat

International Ninepin Island (P)

Finish Russell 25nm approx

#### **Course 15 Starboard**

Start – Boat International Ninepin (S) –

Bird Rock (S) – Royal Huisman Whale Rock

Cardinal Buoy (P)

Finish Russell 25nm approx

## ATTACHMENT C

### MARK DESCRIPTIONS AND POSITIONS

#### Mark GPS Positions

Start/Finish Signal Boat (Long Beach) (Position approximate)	035 14 24 S	174 08 01 E
Start/Finish Signal Boat (Russell) (Position approximate)	035 15 42 S	174 06 16 E
Start/Finish Signal Boat (W of Tapeka Point) (Position approximate)	035 14 39 S	147 06 17 E
Orams Marine Rounding Mark (Position approximate)	035 12 30 S	174 12 25 E
Royal Huisman Whale Rock Cardinal Buoy	035 11 23 S	174 12 00 E
BOAT International Nine Pin Island Rounding Mark	035 09 13 S	174 08 45 E
Bird Rock Rounding Mark	035 09 50 S	174 18 18 E

#### Buoy Identification

Outer Distance Mark (Long Beach, W of Tapeka Point, Russell) - Yellow buoy with NZ Millennium Cup logo

Orams Marine Rounding Mark - 58ft Riviera – Limited Edition with large with orange flag

## ATTACHMENT D

### GPS TRACKER INSTRUCTIONS

The NZ Millennium Cup will be tracked live via YachtBot live tracking system, allowing spectators and fans to follow the excitement of the regatta live during the event and allows you to replay the race time and time again when you are back on shore.

1. All yachts being tracked must carry a tracking device (450 grams).
2. At the morning pre-race briefings, a charged tracking unit will be supplied to each yacht. The tracking unit will already be on and tracking (no need to activate).
3. The tracking device must be returned to the race office each day after the race. You must return the unit each day, even if there is no racing. The units need to be charged overnight and will be re-issued at the daily pre-race briefing.
4. The tracking device must be attached to each yacht in a vertical, central mounting position. This tracking device needs clear signal so please do not stow away in a locker or down below. Keep the top of the tracker clear of any metallic objects, for example don't mount directly under the boom, or a metal hand rail. The carbon in carbon fibre sails also can cause bad signals for GPS devices, as the carbon in the sails is conductive, which means that the signals from the GPS satellites can't be received through these sails. Secure with Velcro and safety clip included and cable tie if necessary.



Watch tracking live or in replay via [www.millenniumcup.com](http://www.millenniumcup.com).

Please note: There will be a charge of \$1400 + GST for any units that are not returned.

